

Mogalakwena Investor Visit

General Overview

March 2025

Cautionary statement

Disclaimer

This presentation has been prepared by Anglo American Platinum Limited ("Anglo American Platinum") and comprises the written materials/slides for a presentation concerning Anglo American Platinum. By attending this presentation and/or receiving the written materials/slides you agree to be bound by the following conditions.

If you have received this presentation and you are not an interested party or are not otherwise permitted by law to receive it, you must return it immediately to Anglo American Platinum. You shall treat and safeguard as private and confidential all information contained in this presentation and take all reasonable steps to preserve such confidentiality.

This presentation is for information purposes only and does not constitute an offer to sell or the solicitation of an offer to buy shares in Anglo American Platinum. Further, it does not constitute a recommendation by Anglo American Platinum or any other party to sell or buy shares in Anglo American Platinum or any other securities. Further, it should not be treated as giving investment, legal, accounting, regulatory, taxation or other advice. No part of this presentation should form the basis of, or be relied on in connection with, or act as any inducement to enter into, any contract or commitment or investment decision whatsoever. All written or oral forward-looking statements attributable to Anglo American Platinum or persons acting on their behalf are qualified in their entirety by these cautionary statements.

The information and opinions contained in this presentation are provided as at the date of this presentation solely for your information and background and are subject to completion, revision and amendment without notice. No person is under any obligation to update or keep current the information contained in this presentation. No reliance may be placed for any purpose whatsoever on the information or opinions contained in the presentation or on their completeness, accuracy or fairness. The contents of the presentation have not been approved by any competent regulatory or supervisory authority.

The information contained in this presentation has not been independently verified by Anglo American Platinum or any other person. No representation, warranty or undertaking, express or implied, is made by Anglo American Platinum or any of its advisers or representatives or their respective affiliates, officers, employees or agents as to, and no reliance should be placed on, the fairness, accuracy, completeness, correctness or reasonableness of the information or the opinions contained herein. Anglo American Platinum and its advisers and representatives and their respective affiliates,

officers, employees and agents expressly disclaim any and all liability (in negligence or otherwise) for any loss howsoever arising from any use of this presentation or its contents or otherwise arising in connection with this presentation, and any errors or inaccuracies therein or omissions therefrom, to the fullest extent permitted by law.

Forward-looking statements

This presentation includes forward-looking statements. All statements, other than statements of historical facts included in this presentation, including, without limitation, those regarding Anglo American Platinum's results of operations, financial position, business, acquisition and divestment strategy, plans and objectives of management for future operations (including development plans and objectives relating to Anglo American Platinum's products, production forecasts and, reserve and resource positions), are forward-looking statements. By their nature, such forward-looking statements involve known and unknown risks, uncertainties and other factors which may cause the actual results, performance or achievements of Anglo American Platinum, or industry results, to be materially different from any future results, performance or achievements expressed or implied by such forward-looking statements.

Such forward-looking statements are based on numerous assumptions regarding Anglo American Platinum's present and future business strategies and the environment in which Anglo American Platinum expects to operate in the future. Important factors that could cause Anglo American Platinum's actual results, performance or achievements to differ materially from those in the forward-looking statements include, among others, levels of actual production during any period, levels of global demand and commodity market prices, mineral resource exploration and development capabilities, recovery rates and other operational capabilities, the availability of mining and processing equipment, the ability to produce and transport products profitably, the impact of foreign currency exchange rates on market prices and operating costs, the availability of sufficient credit, the effects of inflation, political uncertainty and economic conditions in relevant areas of the world, the actions of competitors, activities by governmental authorities such as changes in taxation or safety, health, environmental or other types of regulations in the countries where Anglo American Platinum operates, conflicts over land and resource ownership rights and such other risk factors identified in Anglo American Platinum's most recent Integrated Report.

Forward-looking statements should, therefore, be construed in light of such risk factors and undue reliance should not be placed on forward-

looking statements. These forward-looking statements speak only as of the date of this presentation.

Anglo American Platinum expressly disclaims any obligation or undertaking (except as required by applicable law, the listings requirements of the securities exchange of the JSE Limited in South Africa and any other applicable regulations) to release publicly any updates or revisions to any forward-looking statement contained herein to reflect any change in Anglo American Platinum's expectations with regard thereto or any change in events, conditions or circumstances on which any such statement is based.

Nothing in this presentation should be interpreted to mean that future earnings per share of Anglo American Platinum will necessarily match or exceed historical published earnings per share.

Certain statistical and other information about Anglo American Platinum included in this presentation is sourced from publicly available third party sources. As such it presents the views of those third parties, but may not necessarily correspond with the views held by Anglo American Platinum.

No investment advice

This presentation has been prepared without reference to your particular investment or other objectives, financial situation, taxation position and any other particular needs. It is important that you view this presentation in its entirety. If you are in any doubt in relation to these matters, you should consult your stockbroker, bank manager, solicitor, accountant, taxation adviser or other independent financial adviser (where applicable, as authorised in South Africa, under the Financial Advisory and Intermediary Services Act 37 of 2002).

Alternative performance measures

Throughout this presentation a range of financial and non-financial measures are used to assess our performance, including a number of the financial measures that are not defined under international financial reporting standards (IFRS), which are termed 'alternative performance measures' (APMs). Management uses these measures to monitor Anglo American Platinum's financial performance alongside IFRS measures because they help illustrate the underlying financial performance and position of Anglo American Platinum. These APMs should be considered in addition to, and not as a substitute for, or as superior to, measures of financial performance, financial position or cash flows reported in accordance with IFRS. APMs are not uniformly defined by all companies, including those in Anglo American Platinum's industry. Accordingly, it may not be comparable with similarly titled measures and disclosures by other companies.

Agenda for the site visit

Thursday 27 March

Start time	Agenda Topic	Speaker
19:00	Overlay of programme and induction video	Theto Maake
19:10	Welcome and opening remarks	Craig Miller
19:15	Mogalakwena site visit presentation	Kobus Van Den Berg and senior leadership team
20:00	Q&A	
20:15	Dinner and drinks	
21:00	End of event	

Friday 28 March

05:30	Checkout	
06:00	Depart Ranch Hotel to Mogalakwena Complex	(with a packed breakfast)
08:00 – 13:15	Site visit at Mogalakwena Complex	Group 1 & Group 2
13:20	Travel to Polokwane Airport	
15:30	Flight from Polokwane Gateway Airport to Fireblade Aviation	
16:30	Arrival at Fireblade & shuttle transfer to OR Tambo	

Welcome and opening remarks



Mogalakwena pit rope shovel and haul truck

Mogalakwena investor visit presentation

Haul truck at Mogalakwena



Key discussion points

- Mogalakwena senior leadership team
- The industry's most exciting endowment
- Overview of Mogalakwena
- Significant progress made towards zero harm
- Building resilient communities
- Operational excellence
- Our people: driving operational excellence
- Growth

Senior leadership team: guiding our future

Open-pit mine



Kobus van den Berg
Senior
General Manager



Emanuel Segkokong
Manager Mining,
Load and Haul



Jacques Breytenbach
Manager Mining
Drill & Blast



Alwyn Jordaan
Senior Engineering
Manager



Sam Kgarimetsa
General Manager
Corporate Affairs &
Sustainable Impact



Wendy Maredi
Geology
Manager



Arné Grobbelaar
Manager
Technical Mining



Rameck Zishiri
Senior Commercial
Manager



Mahlodi Tema
Senior Manager
People & Organisation



Carlyn Manchest
Senior Manager
Business Improvement



Sam Gulubela
SHE Manager
(Acting)

Underground mine



Stephan Nothnagel
General Manager UG Exploration
Project and Studies



Jaco Pieters
Principal Project
Manager



Refilwe Mafiri
Principal Mining



Adriaan Neil
Manager Mining



Derick du Plessis
Technical Manager



Jorge Santos
Senior Engineering
Manager



Ricci Finn
People & Organisation
Manager



Erens Rikhotso
Manager
Commercial



Grant Sandow
Section Manager
SHE

AAP concentrators



Lindani Ntombela
General Manager
Concentrators



Herman Kemp
Concentrator
Manager



Mvelo Dube
Senior Engineering
Manager Concentrators



Nthabiseng Maseko
Principal Projects
& Integration

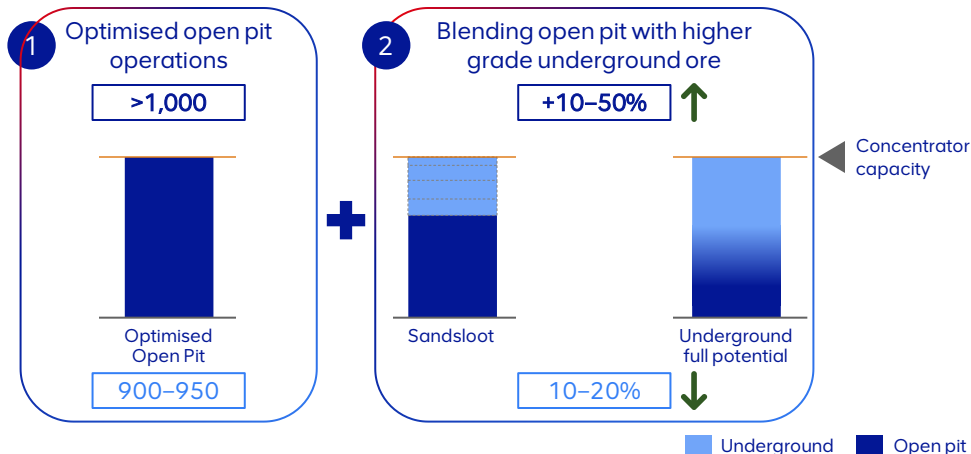
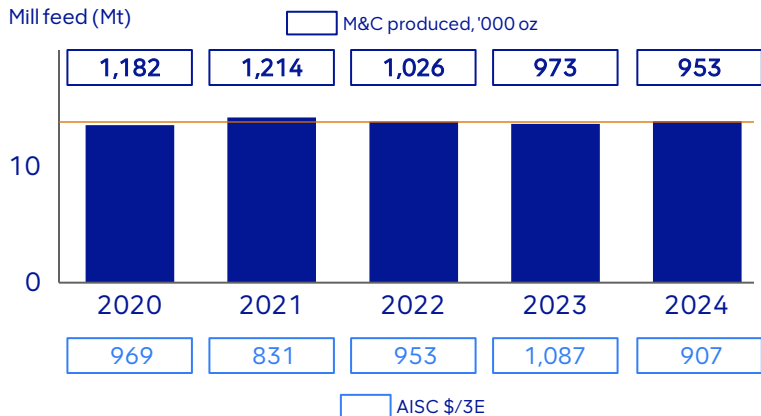


Johan Steyn
Manager Technical
Concentrators



Gerald Mabula
Manager
Mineral Residue

A world-class asset with upside through the underground



- **Long-life open pits:** No immediate need for underground development to sustain throughput and H1 cost curve position, optimised open pit operations delivering >1 Moz p.a.
- **Sufficient concentrator capacity:** We do not need investment for additional capacity
- **Improved grade:** Near-term open pit grade expected at 2.7-2.9 g/t, rising to 3.0 g/t in the mid-term; underground ore expected to be 4-6 g/t before blending
- **Growth:** Combining open pit and underground ore to enhance long-term value, further improvement in AISC and growth

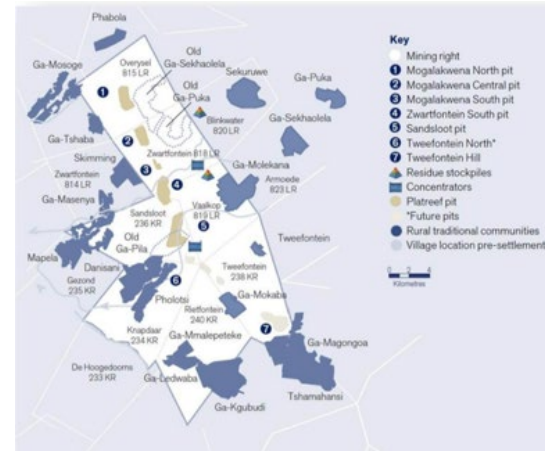
Mogalakwena location



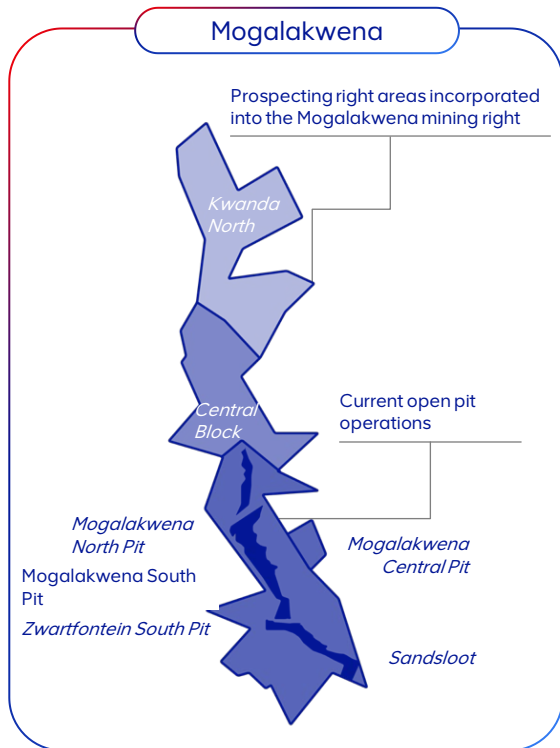
- Part of Limpopo Province
- Governance of Mogalakwena Local Municipality, Mapela Traditional Authority and Mokopane Traditional Authority
- 64 villages make up the Mapela and Mokopane Traditional Authorities



- A mine within communities
- Mining rights spread over Bushveld Complex
- Approximately 364k people around the boundaries of the mine
- ~70% of our total Mogalakwena workforce is sourced from local communities



Mogalakwena: The industry's most exciting endowment



Reserve life
86 years

Resource life
150 years

Target cost position
H1

Potential future role in portfolio
Growth operation

Location Northern Limb, 30km north-west of Mokopane

Mining right Covers 372km²

IRMA status
50

Infrastructure 4 open pits (Zwartfontein, Mogalakwena south, central and north)

2 concentrators (North and South)

Twin exploration decline shafts at Sandsloot under development

Mining method Conventional drill, blast, load and haul surface-mining methods

Long hole open stoping for underground

Ore mined Platreef reef. Operating pit depths vary from surface to ~280m

Where we will take you and what you will see



Equipment appreciation

Visit Rope Shovel 126 loading area

North concentrator

View Point 4

Central pit east viewpoint

View Point 2

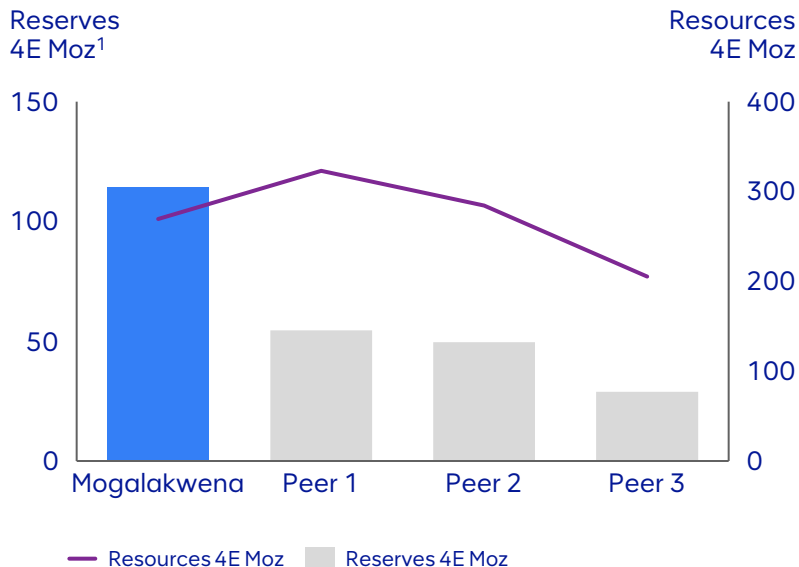
Central pit south viewpoint

View Point 1

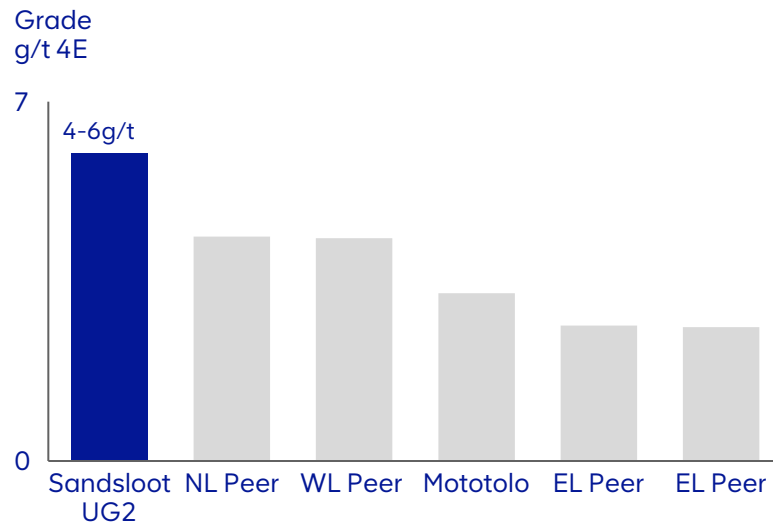
■ Open pit mine plan

Massive ore body amenable to bulk underground mining

Mogalakwena's mineral reserves exceeds the total PGM reserves of our peers in South Africa



Mogalakwena UG reef has higher 4E grades than other mechanised assets in South Africa



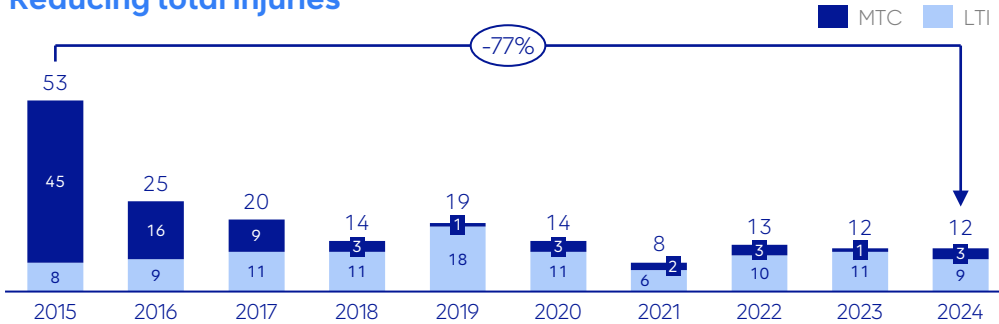
1. Mineral resources are exclusive of mineral reserves; 2. Mogalakwena Sandsloot underground grades guided at 4-6 g/t 4E

Note: Figures are based on the latest reported Mineral Reserves and resources reports; with select peers reporting at 6E; NL = Northern limb; EL = Eastern Limb; WL = Western Limb

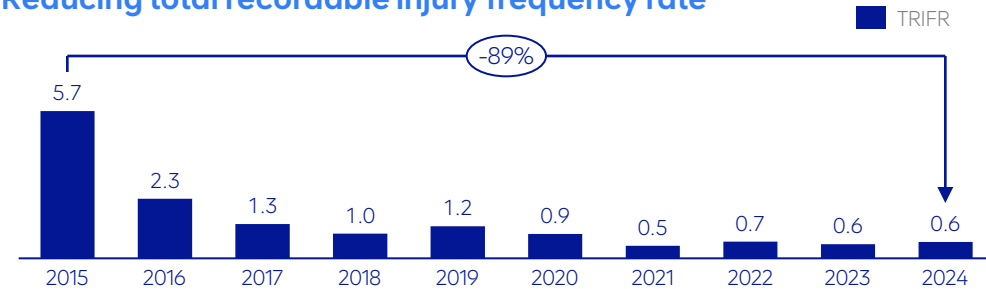
Source: Company filings

Significant progress made towards zero harm

Reducing total injuries



Reducing total recordable injury frequency rate



Safety milestones

22 Million (>12 years)

Fatal Free Shifts

Central Services

3 years injury free

Mogalakwena Complex

48 lost time injury free days

Open Pit Mining

74 injury free days

Mogalakwena achieved IRMA 50 certification

IRMA: Independent, comprehensive assurance standard for all mined materials (excluding energy fuels), providing:

- 1 A global third-party assurance system for responsible mining, credibly measuring environmental and social impacts
- 2 A building block from a wide range of existing, recognised standards
- 3 Recognition and incentives to mines for protecting social and environmental values, while promoting best practices



The IRMA Vision

A world in which the mining industry respects human rights and aspirations of affected communities, provides safe, healthy and supportive workplaces, minimizes harm to the environment, and leaves positive legacies.

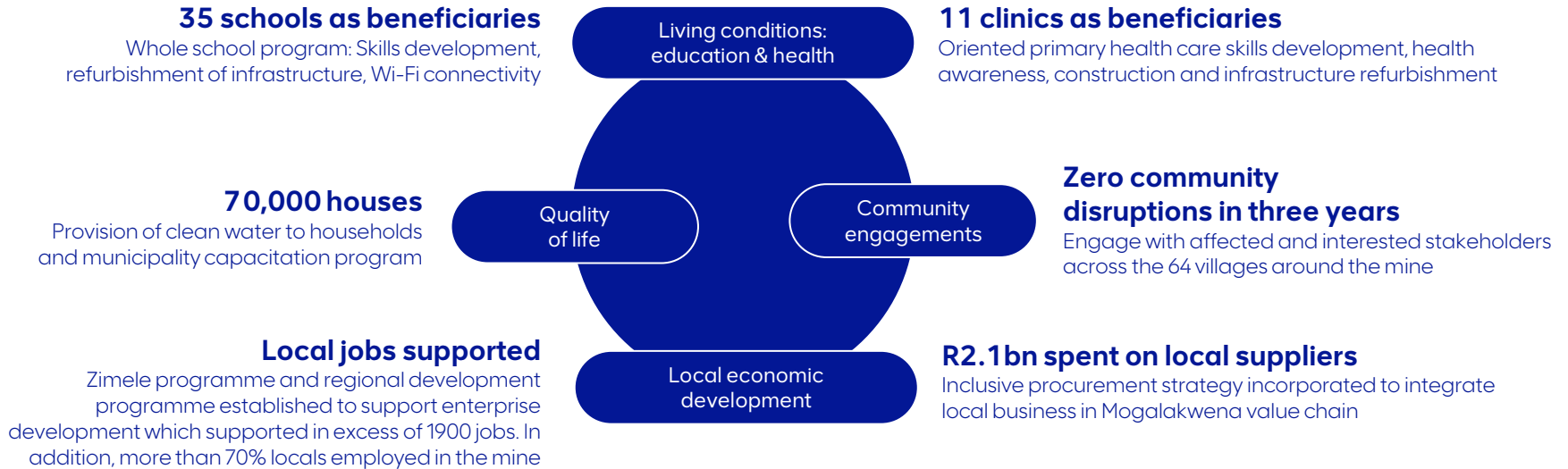
The IRMA Standard separates into four principal areas

Overall, there are 400 individual requirements and 40 critical requirements

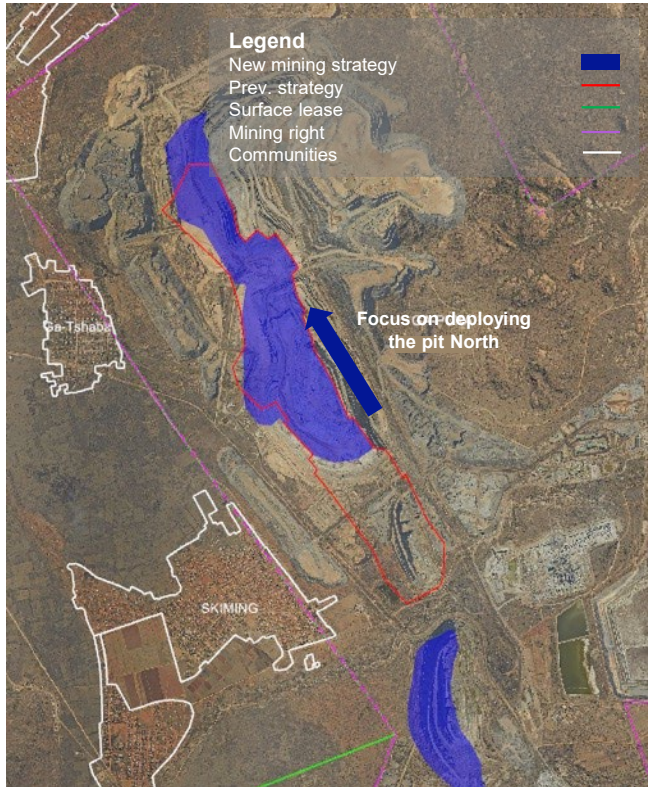


Building resilient communities

To be productive, safe, responsible and sustainable, Mogalakwena operation identified key factors and areas for development to create sustainable and resilient communities through Social Labour Plans



Revised mine plan unlocking key benefits



What did we do ?

Pit optimisation

- Mining north, targeting lower strip ratio cuts
- Improved cut designs reducing waste

Dump optimisation

- Activation of north waste rock dump

Grade

- Focus on high to medium-grade ore exposure

Medium term key benefits

Total tonnes
~ 90 – 120 Mtpa

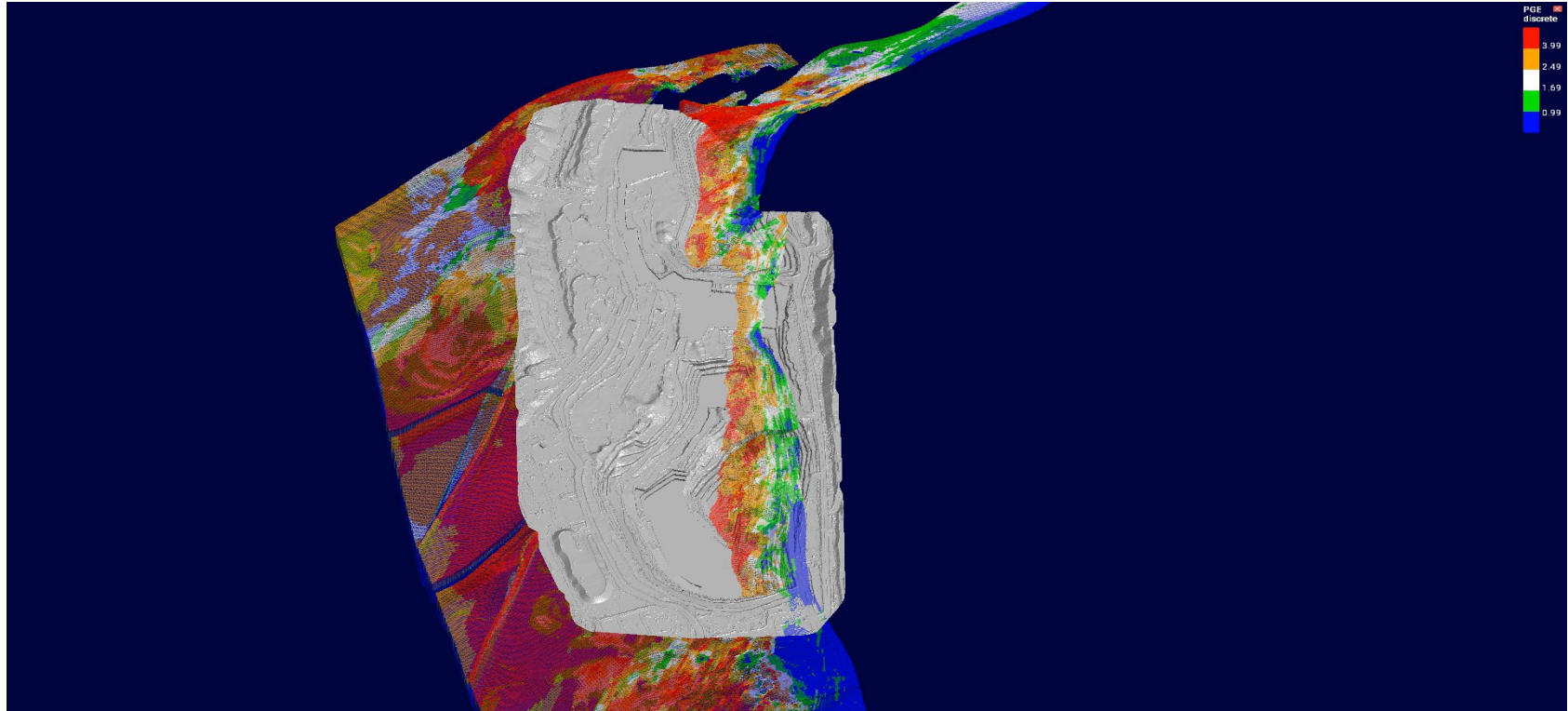
Grade
~ 2.7–3.0 g/t

Strip ratio
~ 4.5 – 6.7

PGMs
1.0 Moz

AISC
H1 cost curve

Our world-class ore body – central pit



Open pit activity-based snapshot

Block prep



Drill & blast



Loading



Hauling



Crushing

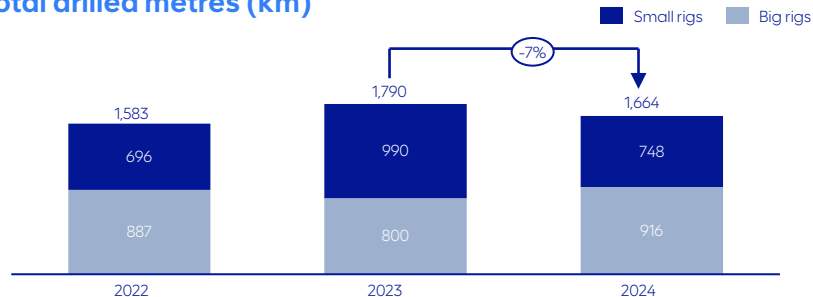


Concentrating

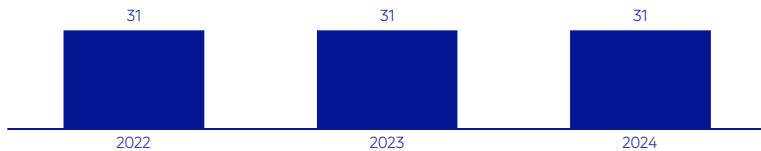


Improved drilling efficiency

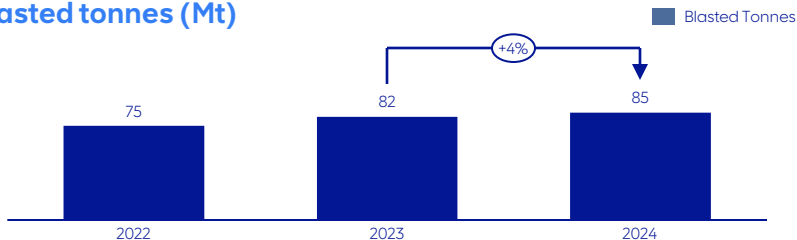
Total drilled metres (km)



Fleet size



Blasted tonnes (Mt)



Key highlights



4% higher blasted tonnes with the same fleet size



Improved quality over speed

- Quality of drilling
- Quality of charging practices in blasting

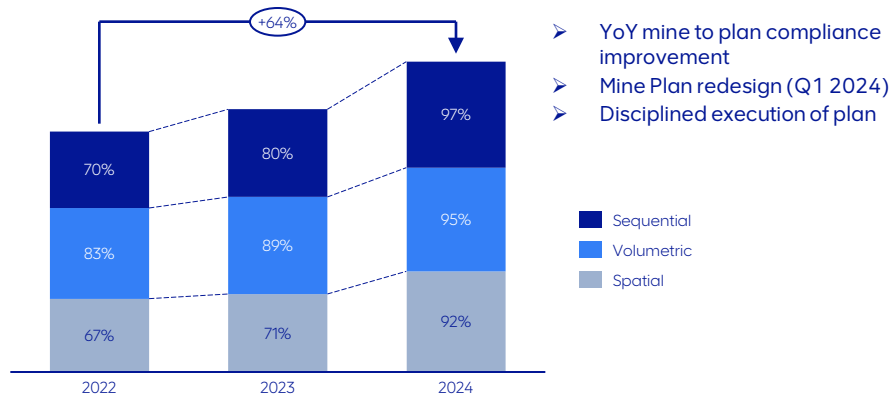


Improved fragmentation



Improved fleet availability

Mine to plan compliance (%)

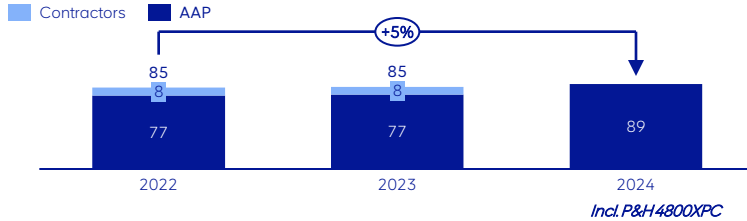


- YoY mine to plan compliance improvement
- Mine Plan redesign (Q1 2024)
- Disciplined execution of plan

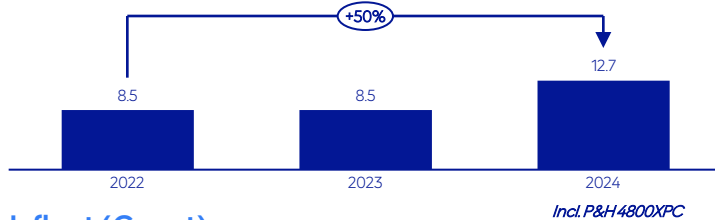
■ Sequential
■ Volumetric
■ Spatial

Load and haul efficiency

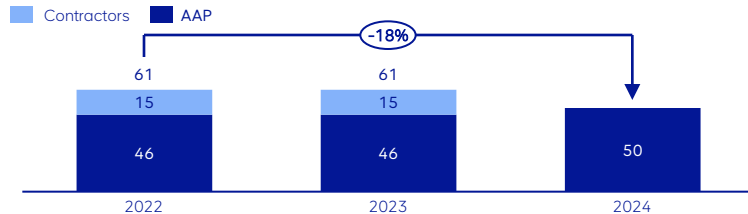
Tonnes mined (Mt)



Average tonnes moved per loader (Mt/loader)



Truck fleet (Count)



Focus areas



Short haul opportunities
(NWRD & Bundwall route
reduction)



Stabilise noticeable
improvement on shovel rates



Achieve First Hour Tonnage & 3
Pass Loading



Minimise excessive shovel relocations
by unlocking geometric compliant
loading faces



Multiskilling & Operator Proficiency

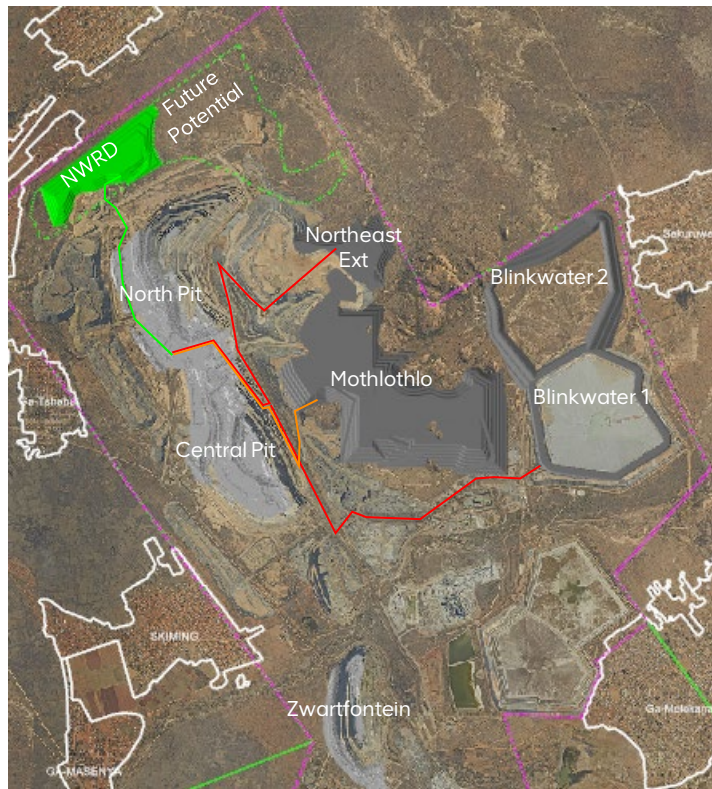
Unit cost (R/tonne)



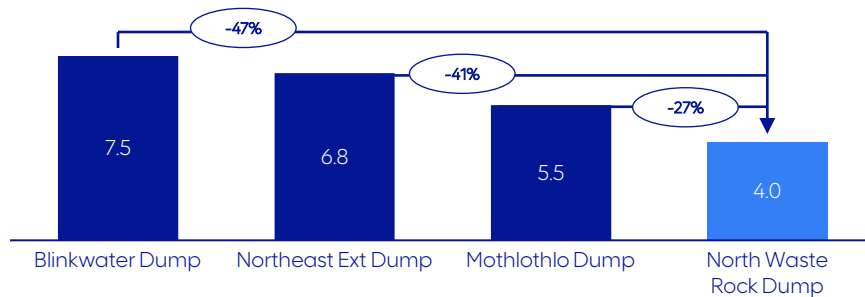
15%
(2022 to 2024)



Enabling shorter hauls for efficiency



North pit hauling distance to dump site (km)



North waste rock dump operational excellence benefits

- Shorter haul distances and shorter cycle times
- Higher tonnes per truck realised
- Reduced shovel hanging time
- Reduced truck requirement and capital spend

Industry-leading concentrator capacity



Mogalakwena North Concentrator

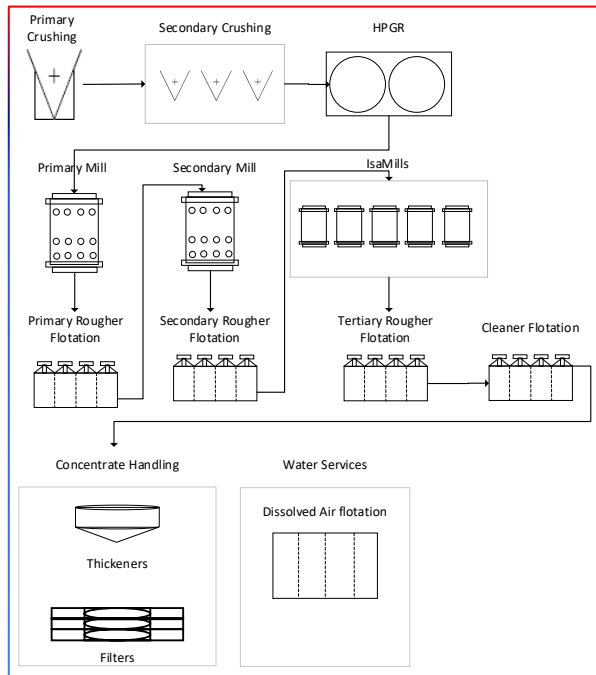
- Commissioned in 2008
- World's largest PGM concentrator
 - 9.5 Mtpa throughput

Mogalakwena South Concentrator

- Commissioned in 1993
- 4.5 Mtpa throughput
- Conventional mill float 3 circuit

Mogalakwena North Concentrator

Simplified flow diagram



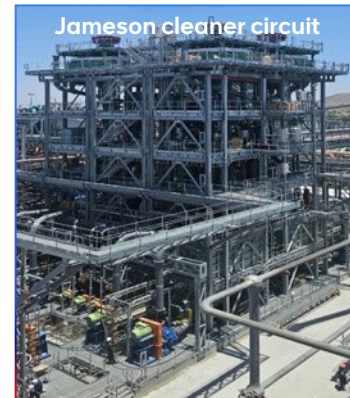
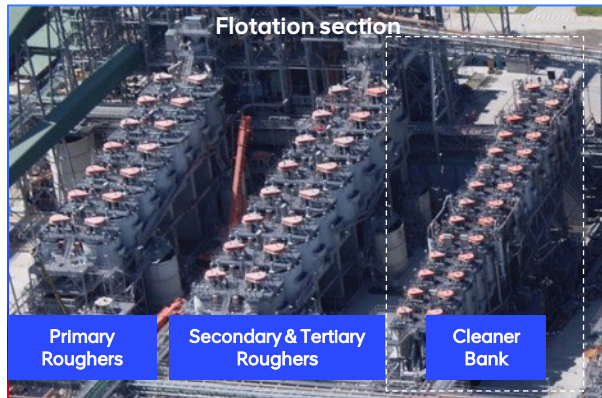
Crushing circuit with primary gyratory crusher, secondary cone crushers and high-pressure grinding roll in tertiary crushing application

Three stage grinding circuit comprising of two ball mills and 5 IsaMills™

Flexibility to operate the circuit in MF2 (Mill – Float – Mill – Mill – Float) or MF3 (Mill – Float – Mill – Float – Mill – Float) configuration

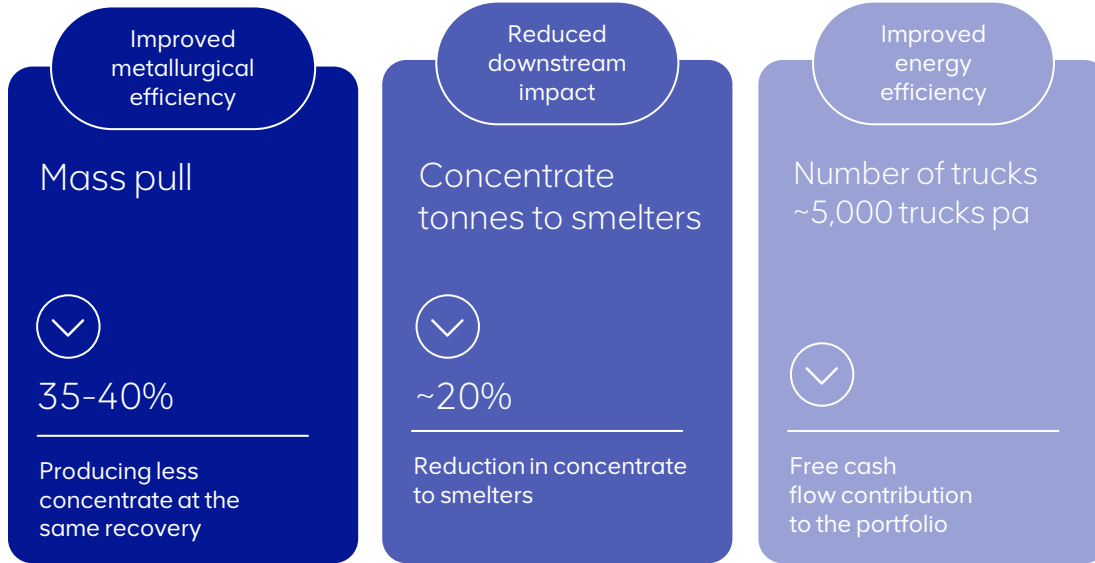
Dissolved air flotation (DAF) plant installed to improve quality of process water by reducing microbial loading to improve flotation efficiency

Jameson cleaner circuit being commissioned as part of the footprint reduction project to replace conventional cleaner bank



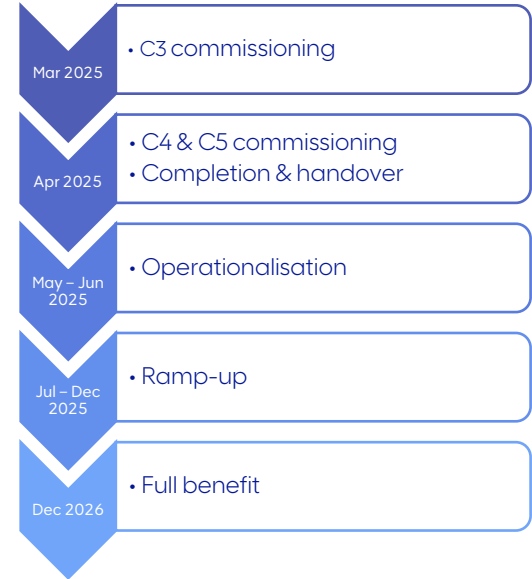
Mass pull reduction project

Commissioning of Jameson cleaner circuit to reduce concentrate tonnes produced while maintaining recovery



Implementation of Jameson cell flotation technology to reduce concentrate produced while maintaining recovery efficiency to reduce smelter footprint

Milestones



Sandsloot Underground

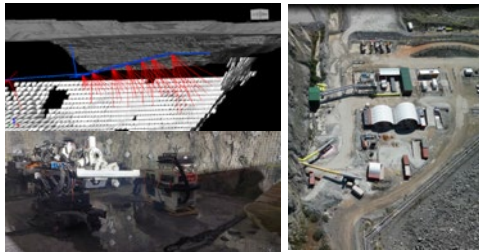
Resource development plan



The Sandsloot resource was selected as the **highest-value case for initiating** an underground mine.



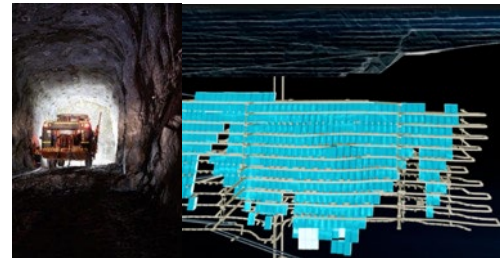
Exploration decline



To date: 7km developed, 33km underground exploration drilled.
Exploration decline intersecting the reef: Q3 2024



Large-scale mine

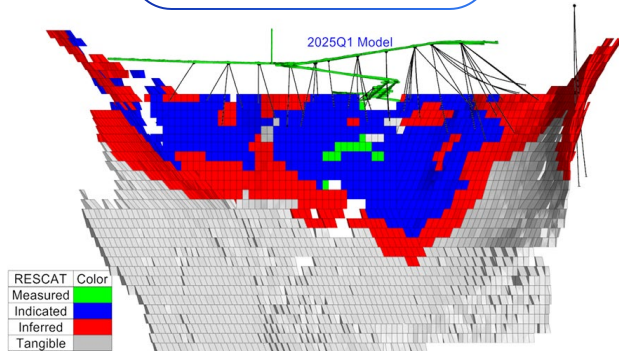


Modular execution with scalability to deliver 4-6 g/t

This approach aims to fully develop the Mogalakwena Tier 1 orebody to its maximum potential

Sandsloot Underground Resource Confidence

Future Resource Development Strategy



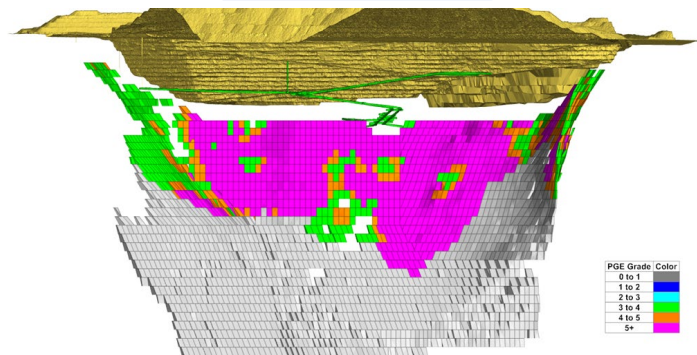
Resource-Driven Flexibility and Optionality

Drilling programs designed to maintain schedule agility and mining flexibility

Ensures sustainable progression toward trial mining and full-scale production



Total Inventory



2025 Inventory Snapshot

Grade range: 4 – 6g/t 4E, supporting robust project economics

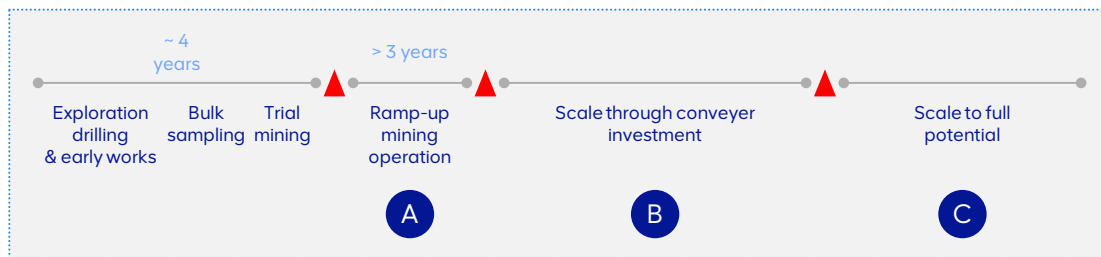
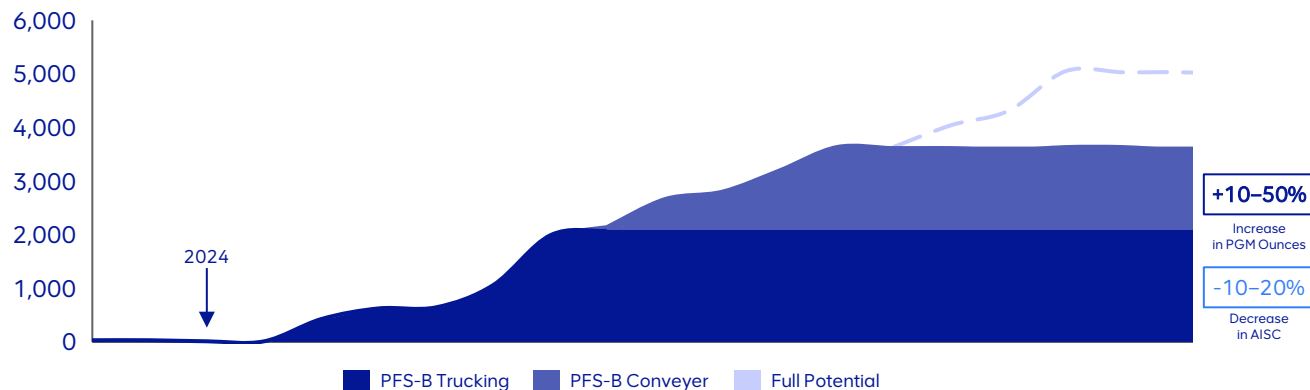
Development Drilling Schedule closely linked

Indicated resource needed ≥ 3 years ahead of development

Measured confidence required ≥ 2 years ahead of stoping

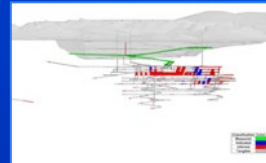
Multiple decision points scale the Sandsloot Underground development pathway

Mill Feed (kt)

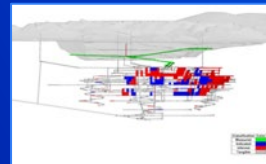


▲ Key decision point

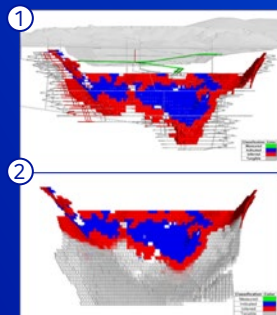
(A) Ramp up mining operation



(B) Investment in enabling infrastructure

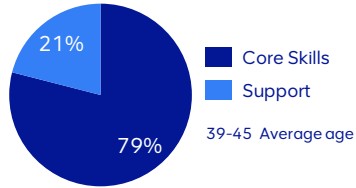


(C) Scale to full potential



Our people: driving operational excellence

Organisational profile



40% of the workforce are females in Critical and Senior roles

<0.24% Low turnover rate

1% of the workforce are living with Disability

70% of the workforce are from the local Communities

95% of the workforce are qualified and digitally literate

Compelling employee value proposition

Employee wellness

Incentivise high performance

Culture

Career development



Strengthening technical capabilities

Skills development, and social responsibility makes us a long-term strategic investment



Mining academy



Process academy



Engineering academy



Early talent programmes

Closing



Mogalakwena pit rope shovel and haul truck

A world class asset delivering resilient returns with multiple growth optionality

Assets

Resource endowment supporting growth

86 years reserve

>150 years resource

Capabilities

Operational excellence

Mining more with less

Efficiency & productivity improvements in drilling & load and haul

Growth

Sandsloot underground potential

+10-50% PGMs

Blending open pit with underground ore,
Underground grade 4-6 g/t 4E

Industry-leading concentrator capacity

14Mtpa throughout

World's largest PGM concentrator

Resilient performance

\$900-950/ 3E oz

H1 cost curve target

Improvement in AISC & long term value

10-20% lower AISC

Driving Mogalakwena further down the cost curve

Committed to zero harm and integrating sustainability in what we do



Q&A